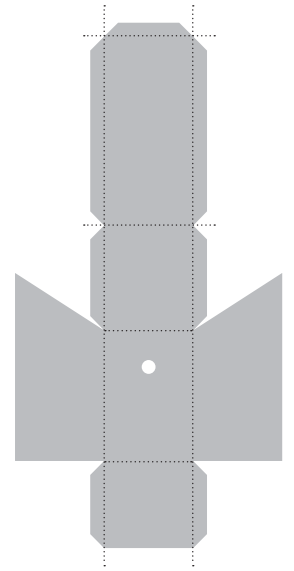


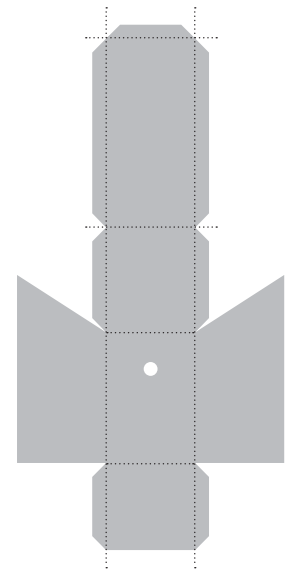
1. Print out on 160gsm card
2. Cut out around body and tabs
3. Score and fold along dotted lines as indicated above
4. Stick the tabs carefully

In the Herald errata (5)



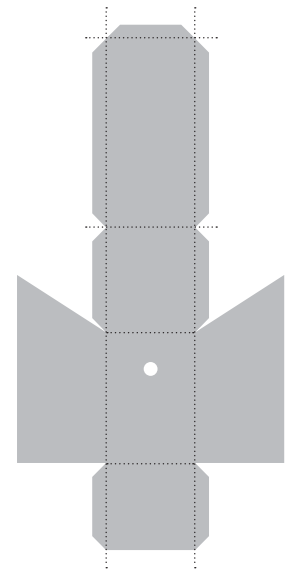
1. Print out on 160gsm card
2. Score and fold along dotted lines as indicated above
3. Cut out around body and tabs
4. Stick the tabs carefully

Green leaves and orange sachets
grow and harmonise (5)



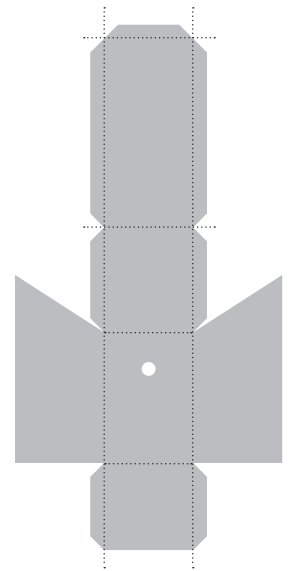
1. Print out on 160gsm card
2. Cut out around body and tabs
3. Score and fold along dotted lines as indicated above
4. Stick the tabs carefully

Some brash, rude, flashy blonde (3)



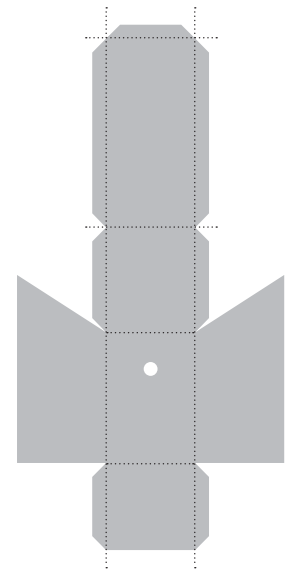
1. Print out on 160gsm card
2. Cut out around body and tabs
3. Score and fold along dotted lines as indicated above
4. Stick the tabs carefully

A frisbee chucker's nightmare (5)

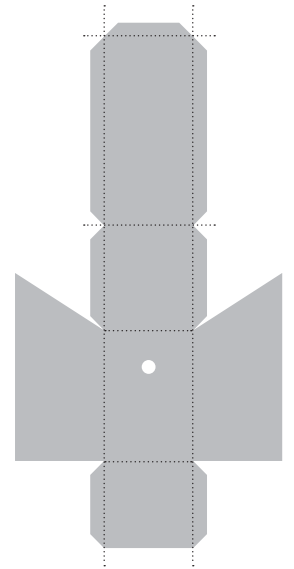


1. Print out on 160gsm card
2. Cut out around body and tabs
3. Score and fold along dotted lines as indicated above
4. Stick the tabs carefully

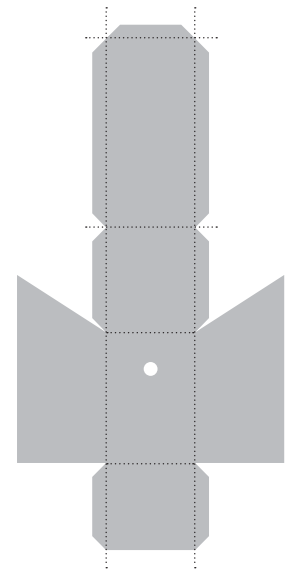
In the Pink Page and Late Results (4)



1. Print out on 160gsm card
2. Cut out around body and tabs
3. Score and fold along dotted lines as indicated above
4. Stick the tabs carefully

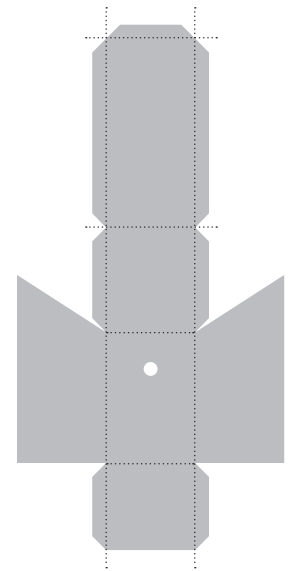


1. Print out on 160gsm card
2. Cut out around body and tabs
3. Score and fold along dotted lines as indicated above
4. Stick the tabs carefully

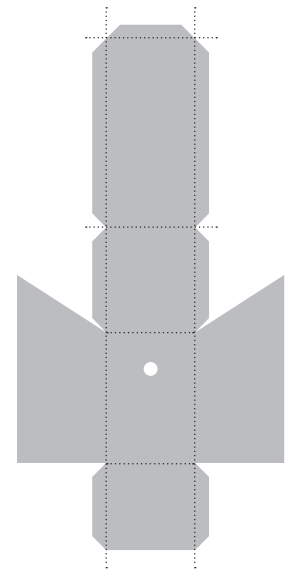


1. Print out on 160gsm card
2. Cut out around body and tabs
3. Score and fold along dotted lines as indicated above
4. Stick the tabs carefully

Golden syrup Grandma, please! (5)

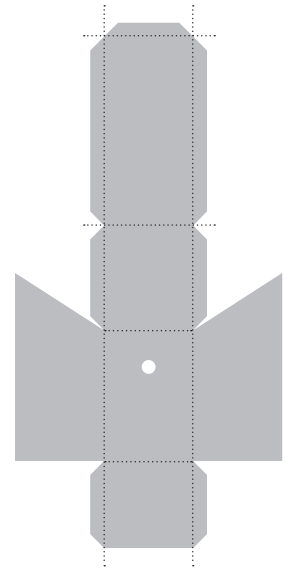
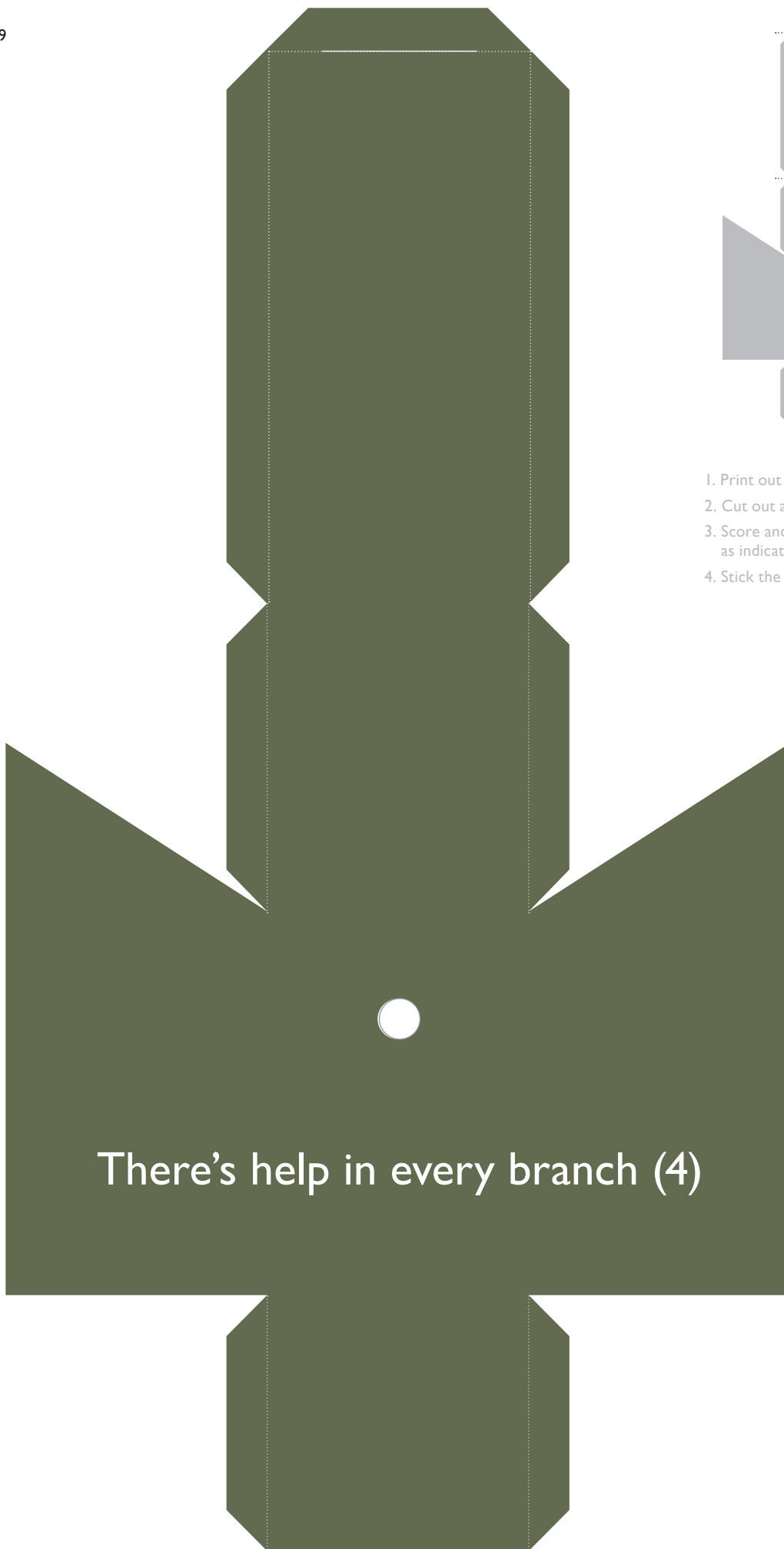


1. Print out on 160gsm card
2. Cut out around body and tabs
3. Score and fold along dotted lines as indicated above
4. Stick the tabs carefully



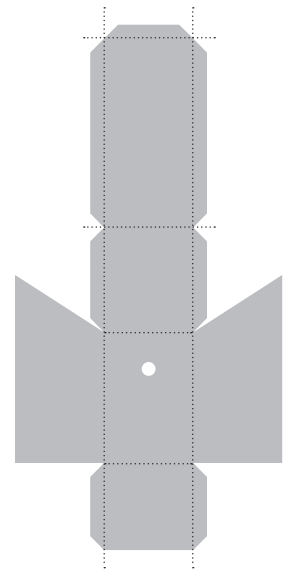
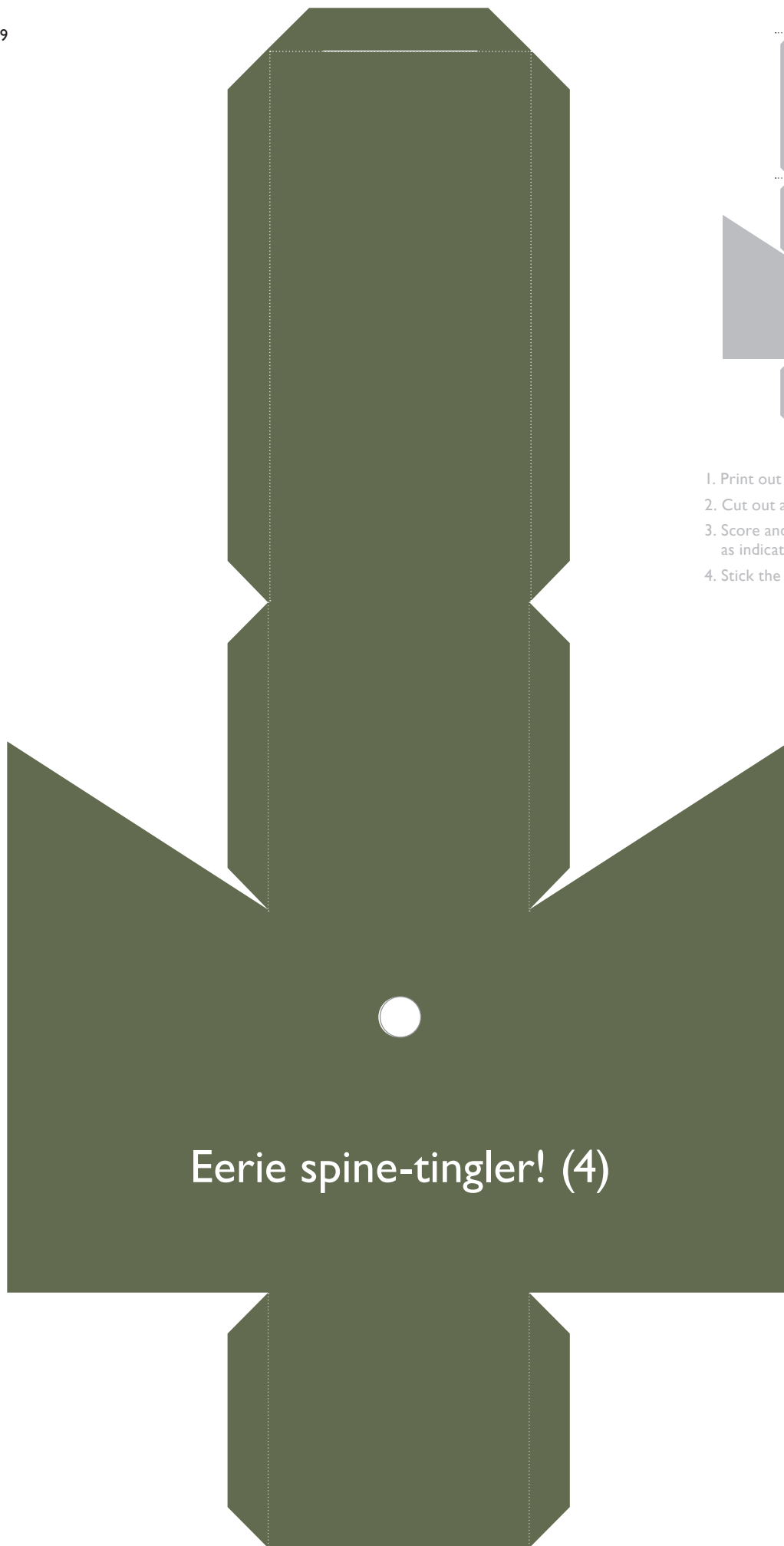
1. Print out on 160gsm card
2. Cut out around body and tabs
3. Score and fold along dotted lines as indicated above
4. Stick the tabs carefully

Soaked nutter (4)



1. Print out on 160gsm card
2. Cut out around body and tabs
3. Score and fold along dotted lines as indicated above
4. Stick the tabs carefully

There's help in every branch (4)



1. Print out on 160gsm card
2. Cut out around body and tabs
3. Score and fold along dotted lines as indicated above
4. Stick the tabs carefully

Eerie spine-tingler! (4)